



**SENSBLUE**  
**ATLAS**  
sensing solutions



**ATRONIA**

TECH THAT MAKES SENSE

[atronia.eu](http://atronia.eu)

# SENSBLUE ATLAS sensing solutions

**Don't take a Swiss knife to a gun fight. Take a tank.**

**SENSBLUE ATLAS** is the gateway that you were looking for. Beyond revolution, it's a quantum leap that bridges the gap between traditional monitoring systems and the future of smart, interconnected operations.

With its modular and scalable design, **ATLAS** enables users to monitor and control various systems, ensuring efficiency, reliability, and adaptability.

**Beyond your needs.  
It turns out, you can always get what you want.**



**In its element.**

**SENSBLUE ATLAS was designed to be highly adaptable to every environment and allow multiple ways of connection in the most remote locations.**

**The only reasonable thing in ATLAS?**

Its price.

**Everything else?**

Ridiculously powerful.

## Key Features

- **Processor:** Raspberry Pi 4 CM4 (Broadcom BCM2711, quad-core Cortex-A72)
- **Wireless Connectivity:** Built-in Wi-Fi, Bluetooth Low Energy (BLE)
- **LoRa Radio:** Add-on for long-range, low-power communication
- **I/O:** 12 DO, 6 AI, 2 Relays, 2 Load Cell Inputs, RS485, 2x USB, HDMI, 2x Ethernet
- **Display:** 1.47-inch IPS TFT screen
- **Navigation:** Joystick for menu navigation
- **Expandability:** Modular/expandable design
- **Integrated LTE:** Default connectivity
- **Operating System:** Linux-based



## Real-world applications

**ATRONIA** has proven its value across multiple industries:

### Backed by experience.

**SENSBLUE ATLAS** builds on the success of its predecessors, with proven integrations in groundbreaking products such as:

- **PREVENT:** Revolutionizing wind turbine efficiency by controlling nacelle temperatures to mitigate risks from extreme weather, **reducing failures by 50%.**
- **FIREFLY:** Ensuring compliance and safety in obstruction light management with real-time remote monitoring and predictive maintenance.

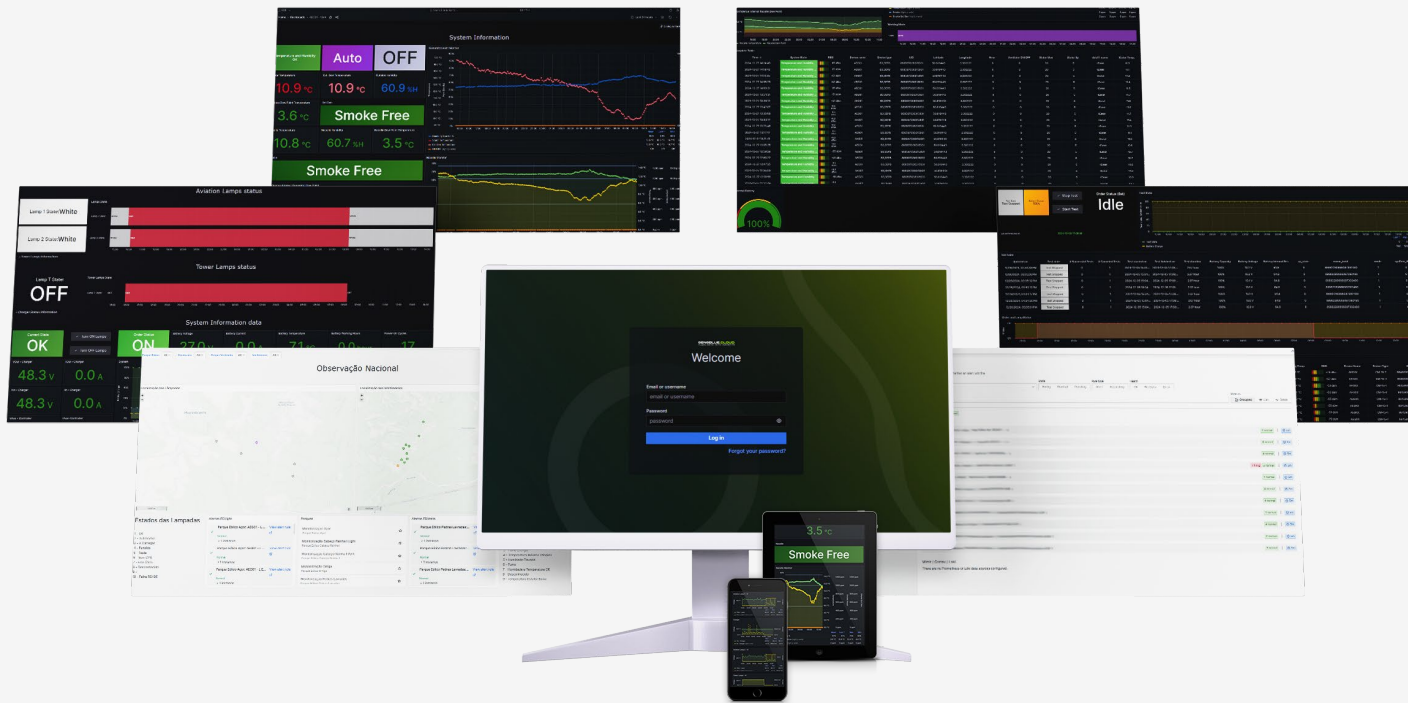
These applications highlight **ATLAS**'s ability to adapt to diverse challenges, from renewable energy to aviation safety, proving its robustness and versatility.

**ATRONIA** previously developed an intelligent algorithm, **AURA** (Adaptive Utilization & Response Algorithm), which functions similarly to a PID system but incorporates machine learning and adaptive intelligence.

This system successfully reduced energy costs in cooling applications by up to 10%. With **ATLAS**, **AURA** can now be deployed across various industries:

- Industrial Cooling Systems: Optimizing temperature control for manufacturing and logistics.
- Naval Refrigeration: Enhancing efficiency in marine cooling applications.
- Building HVAC Systems: Smart automation for energy-efficient climate control.
- Other Potential Applications:
  - Data center cooling optimization.
  - Agricultural greenhouse climate management.
  - Smart grid energy regulation.





# SENSBLUE.CLOUD

TURN DATA INTO INSIGHTS



# SENBLUE.CLOUD

## TURN DATA INTO INSIGHTS

**SENBLUE ATLAS** is a part of our **SENBLUE.CLOUD** platform which means that:

- **All data is seamlessly transferred** to the monitoring server network;
- **All data fees are already included in the product** (no need for external SIM cards) allowing for a quick installation and deployment\*.
- You are **granted access to your ATLAS**, and user access level is configurable, such as each individual park/group can only be monitored by its person in charge.

**Keep your data up to date.**

**Our servers are in Europe** and each partner is attributed to an **independent machine**, further increasing data safety and backup.

All data is backed up every week and available for viewing and downloading at all times.

Secured communications via HTTPS POST are standard. VPN connection is available upon request.



*\* Special conditions may apply.*



**SENSBLUE**  
**ATLAS**  
sensing solutions



**ATRONIA**

TECH THAT MAKES SENSE

[atronia.eu](http://atronia.eu)